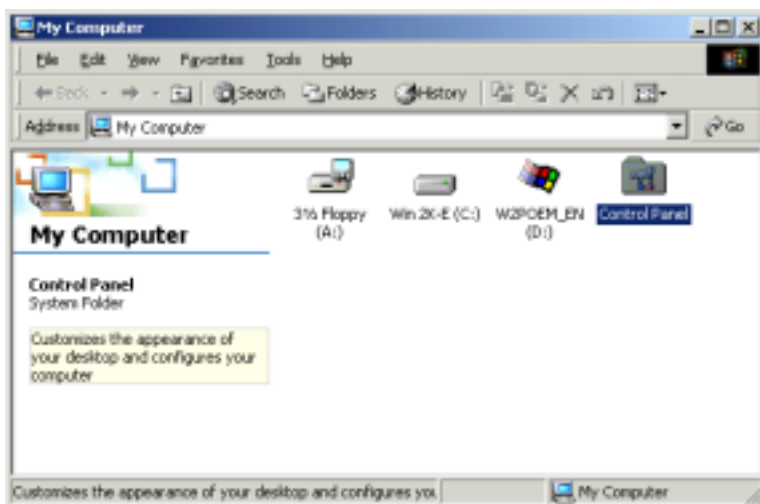


# Windows 2000 IR setup for IRWave IR-520S

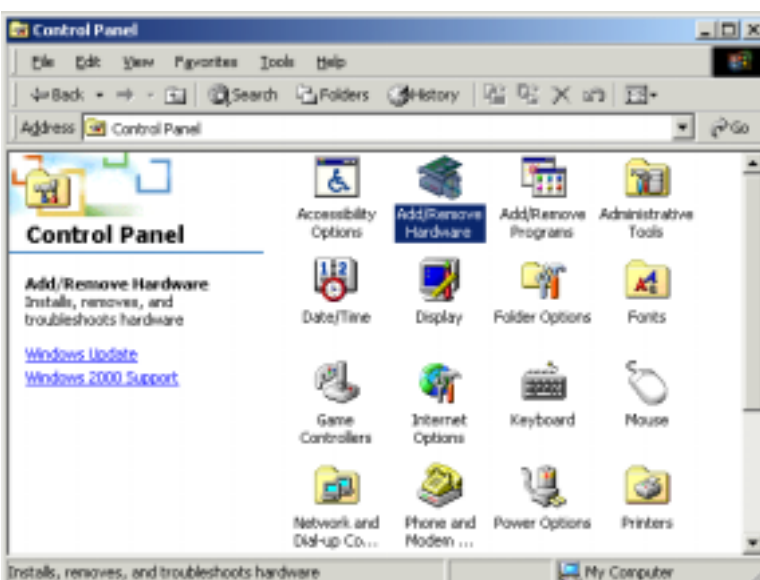


1. Connect IRWave IR520S serial adapter to the Com port of desktop PC.

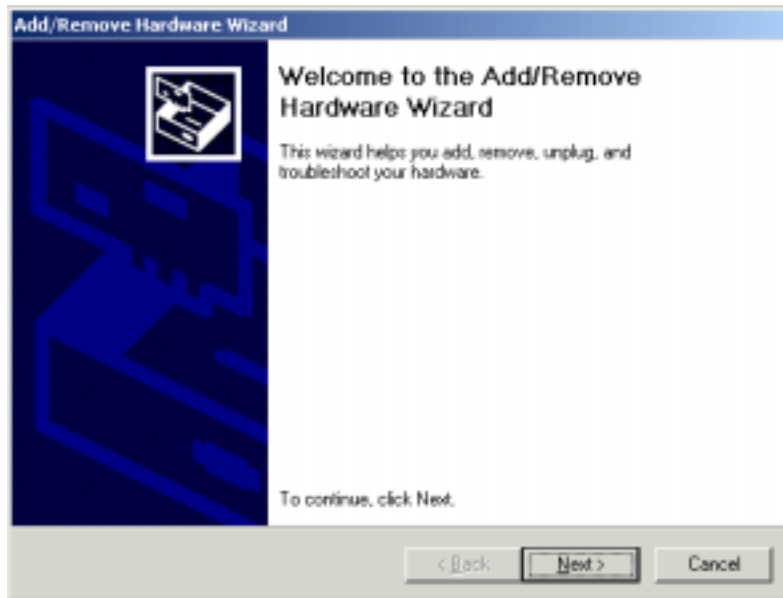
2. Go to “My Computer” and double click .



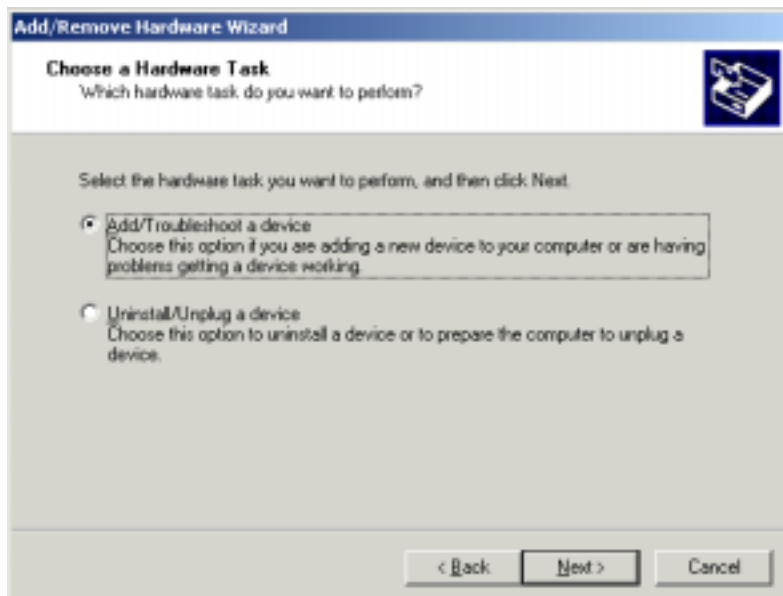
3. Go to “Control Panel” and double click .



4. Go to “Add New Hardware” and double click.



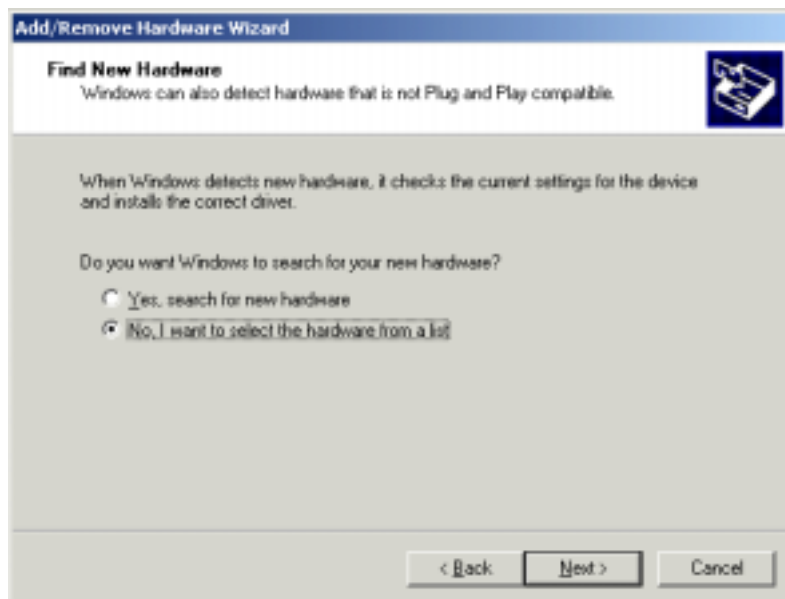
5. Click on “Next>”.



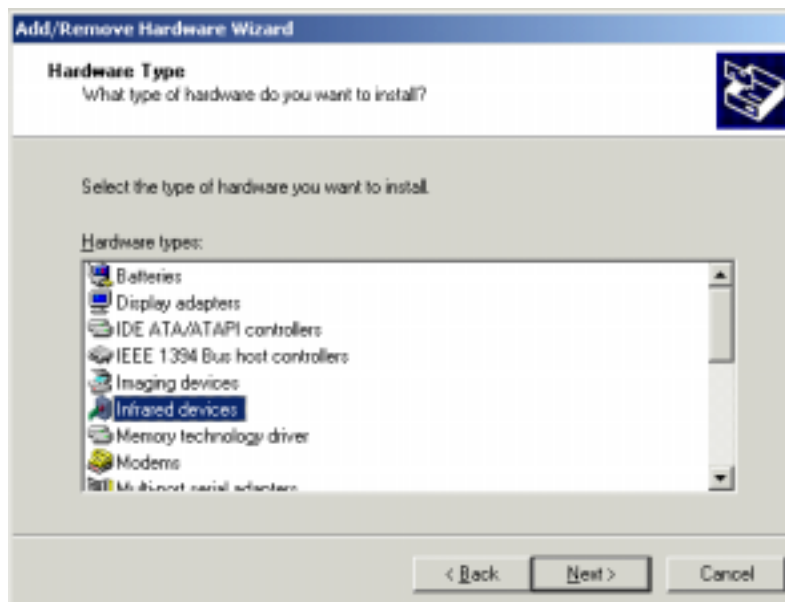
6. Select “Add/Troubleshoot a device” and Click on “Next>”.



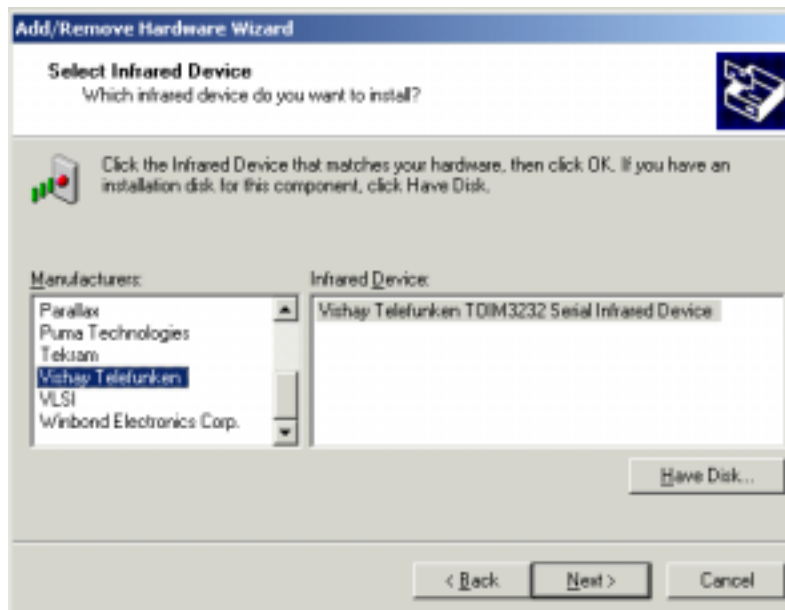
7. Select “Add a new device” and Click on “Next>”



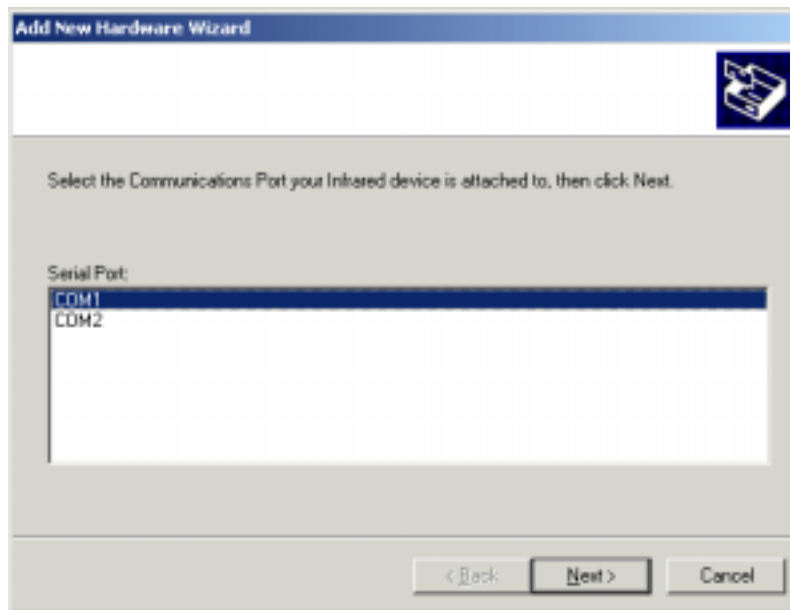
8. Select “No, I wish to select the hardware from a list” and Click on “Next>”



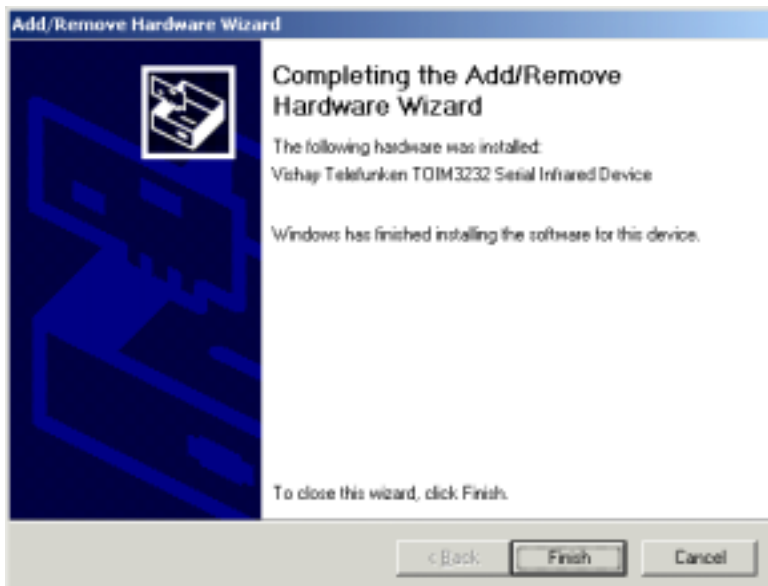
9. Scroll down the menu and highlight “Infrared devices”, then click on “Next”.



10. Under “Manufacturers” Select “Vishay Telefunken”, and then in “Infrared Device” Select “Vishay Telefunken TOIM3232 Serial hardware Device”, then click on “Next”. , then click on “Next”.



11. Select the COM port to which the Infrared device is physically connected. In most cases, choose COM2. Click on “Next>”.



12. Click on “Finish”, The driver is installed successfully.

13. Please reboot your computer.