

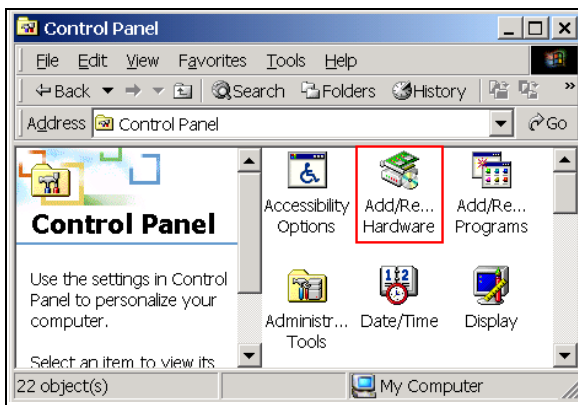
Windows 2000 IR setup for IR520SA

Connect IR520SA serial adapter to the 9 pin male D type connector of the desktop or laptop PC.

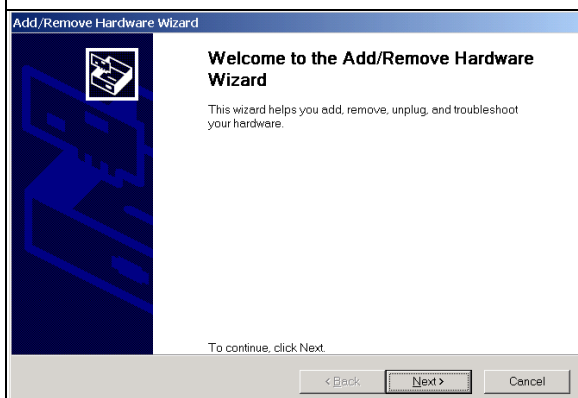
- Before using IR520SA please make sure the motherboard BIOS ACPI function had been **DISABLE**.

For example the AWARD BIOS setting:

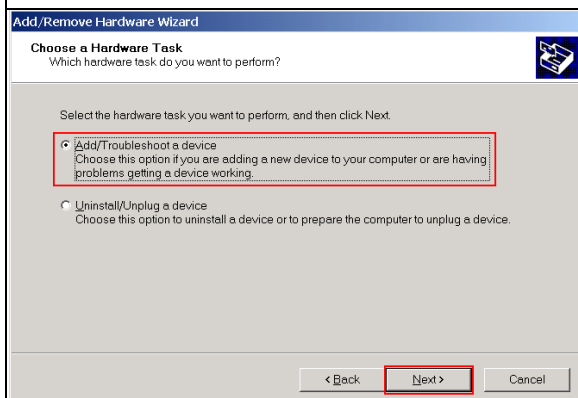
Computer power on→Press “Del” key until go into the BIOS CMOS Setup Utility→Move the light bar to the “Power Management Setup” and press the enter key→Move the light bar to the “ACPI function” and set to disable



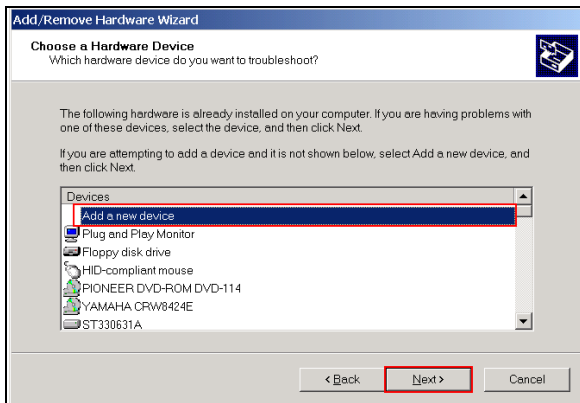
1. Go to “Control Panel” and double click on “Add New Hardware”.



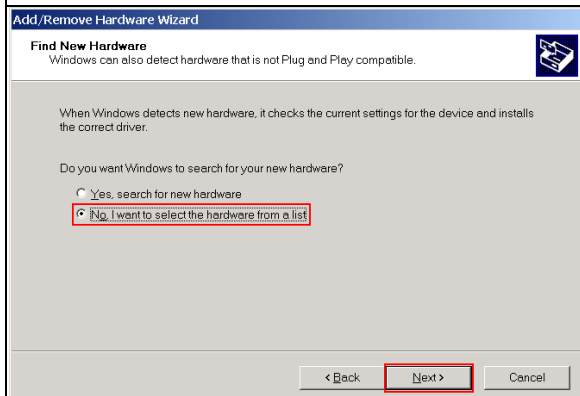
2. Click on “Next”



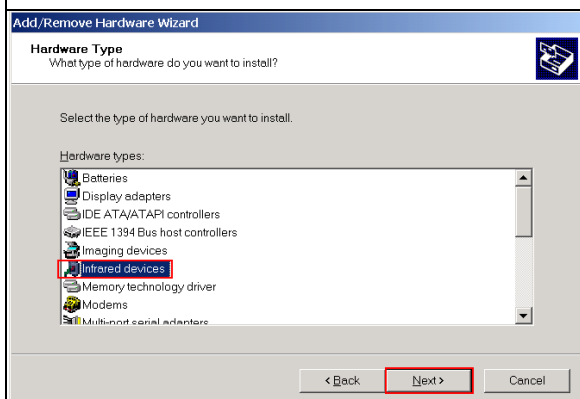
3. Select Add/Troubleshoot a device then click on “Next”.



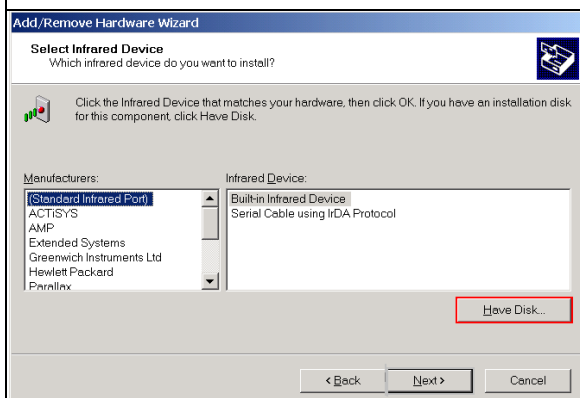
4. Scroll down the menu and highlight “Add a new Device”, then click on “Next”.



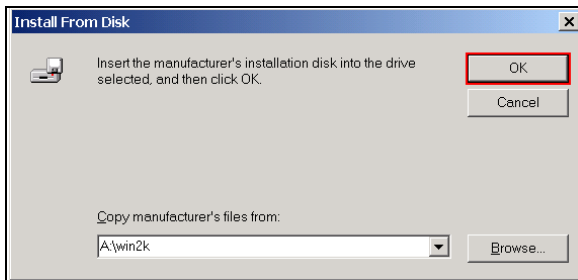
5. Select “No, I want to select the hardware from a list” then click on “Next”



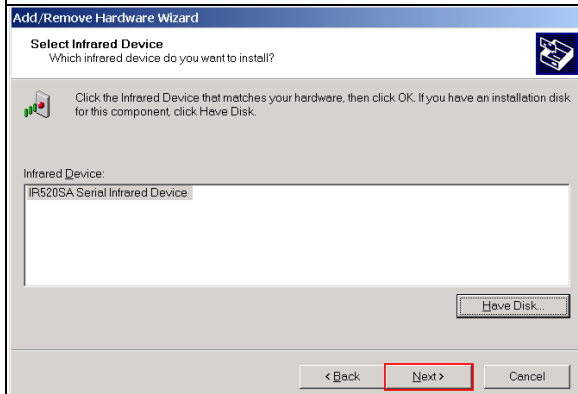
6. Scroll down the menu and highlight “Infrared Devices”, then click on “Next” .



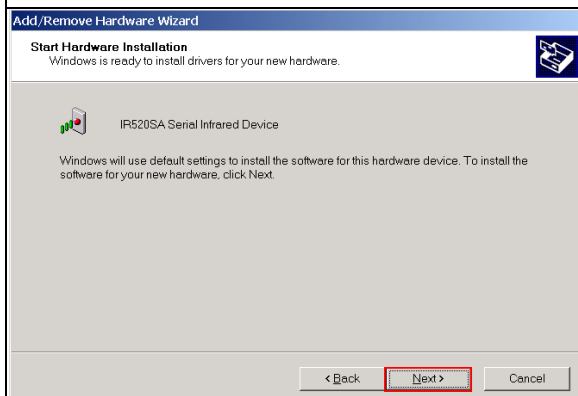
7. Under “Manufacturers” and the “Infrared Devices” Select item, Please click on “Have Disk” button.



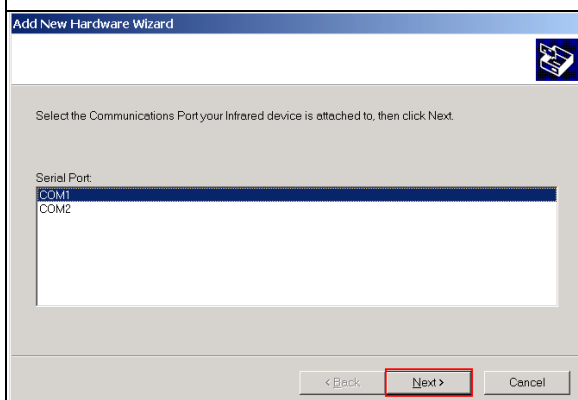
8. Fill in the IR520SA driver location area then click on “OK”



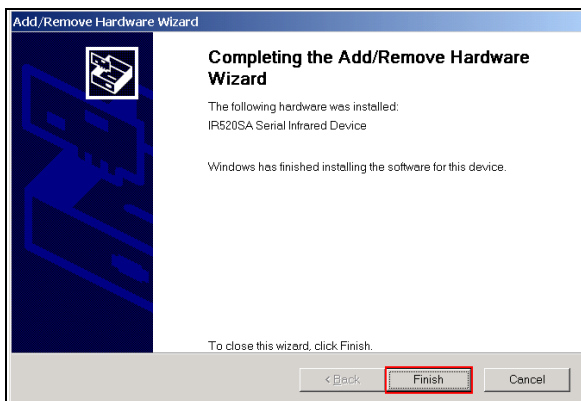
9. Click on “Next”



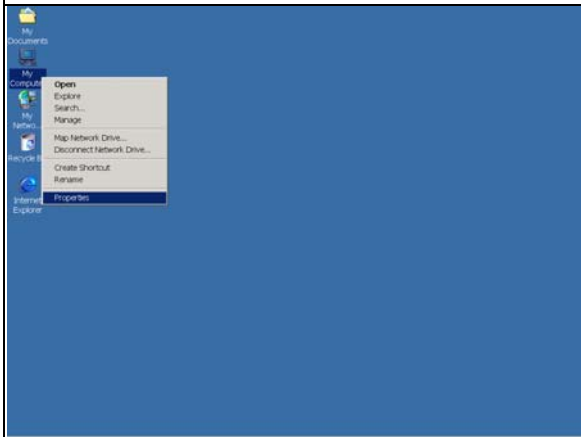
10. Click on “Next”



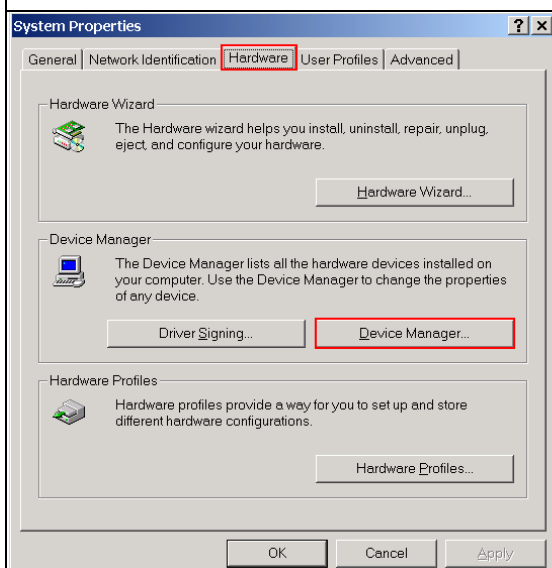
11. Select the port which the IR520SA is physically connected then click on “Next”



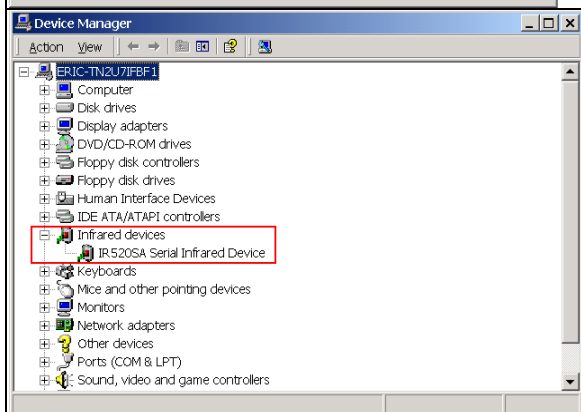
12. Click on “Finish”, The driver is installed successfully.



13. If user want to check the driver installed already or not the he can use the mouse point to the “My Computer” icon and click on left key once → Click on mouse right key once → Move the light bar to the “Property” and click on mouse left key



14. Select the “Hardware” → click on the “Device Manager”



15. Check the “Infrared devices”