

## Before you start

### 1

#### Local Cable Service

Please contact your Cable Internet provider to find out the procedure to register the modem with their network.

The Cable Internet provider will need the following modem information:

- **Modem Make and Model** i.e. D-Link DCM-200
- **Modem Serial Number** i.e. HQT10C000180 (normally found on the label at the bottom of the unit).
- **Modem MAC Address** i.e. 0050BA2F0804 (on the back of the modem)

### 2

#### Connecting The Cable Modem

Connect the external power adapter into the connector labeled “**POWER**” and the other end to the electrical outlet.

**\*NOTE: Use only the AC power adapter supplied with the DCM-200 Cable Modem.**



## Connecting The Cable Modem *Continued...*

Connect the coaxial cable provided for the Internet connection to the jack labeled “**CABLE IN**” in the back of the cable modem unit.

Wait 1 to 3 minutes for the **status** light to illuminate. If the **status** LED does not turn “ON,” please contact your broadband cable company for further instructions.

**NOTE:**

*\* The DCM-200 USB/Ethernet Cable Modem will work only with the Ethernet port **OR** the USB port connected. BOTH PORTS CANNOT BE CONNECTED SIMULTANEOUSLY.*



**Ethernet Cable**

OR



**USB Cable**

**A1.** Connect an Ethernet cable to the port labeled “**Ethernet**” on the back of the cable modem. Plug the other end of the Ethernet cable into the Ethernet adapter that is installed in your computer.

**A2.** Connect a USB cable to the “**USB type B**” port on the back of the cable modem unit. Plug the other end of the USB cable into the “**USB type A**” outlet on your computer.

## Connecting The Cable Modem *Continued...*

The final cable modem setup will look like the figures below:

### Ethernet Cable Connection



### USB Cable Connection



OR

**\*Note:** When using the USB Cable Connection, make sure the **Status** light located at the front of the modem is “**ON**” (not blinking) before connecting the USB cable (type A end) to your computer. **DO NOT CONNECT THE USB CABLE TO YOUR COMPUTER IF THE STATUS LED DOES NOT SHOW A SOLID LIGHT.**

If the STATUS LED continues to blink, please contact your cable provider to ensure that your cable modem is provisioned\* on their network.

\* *Your cable modem provider will need the **model number, serial number and MAC (Media Access Control) Address** of your modem in order to “provision” your modem on the network.*

If you are using the **Ethernet cable** to make your connection, you have now completed the installation. Enjoy your new cable modem!

For those using the **USB cable** connection, please continue with the installation of the USB drivers, step 4.

### USB Driver Installation

Windows XP	Page 5
Windows 2000	Page 7
Windows ME	Page 11
Windows 98/98SE	Page 12

# 3

## Verifying The Modem Status Lights



Power Indicator      Link Light      Activity Light      Status Indicator

Verify the Cable Modem connections using the LED indicators

- **Power:** The Power LED will be “ON” after the modem has been plugged into an AC power source.
- **Link:** The Link LED will be “ON” when the connection from the cable modem to the local network is established. The Link LED “ON” light means that computers on the local network have access through the cable modem.
- **Act (Activity):** This LED indicates that there is “data traffic” activity. This lighted LED means that data packets are being passed through the cable modem.
- **Status:** The Status LED will be “ON” solid when the cable modem is properly connected to the cable network (ISP). \* **If your status light continues to blink, please contact your cable operator for further instructions.**

# 4

## Installing the USB Drivers

**\*Note:** *This installation is only necessary if you are using the USB cable to connect your cable modem to the computer.*

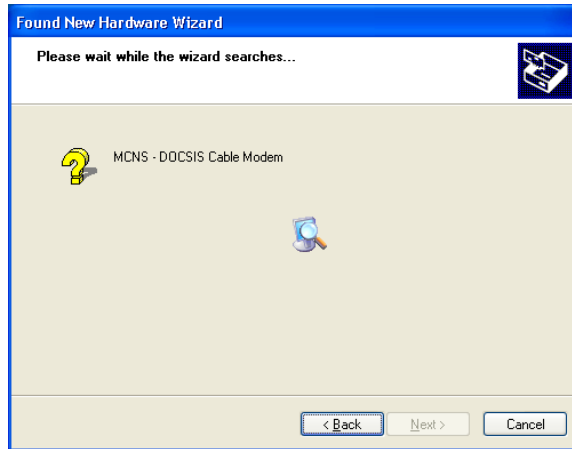
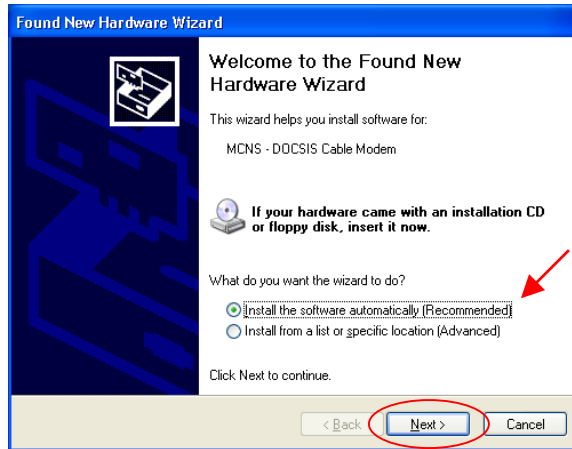
### Windows XP Driver Installation

When your computer is running Windows XP, once the USB cable is connected to the USB interface, the following window will be displayed:

*(If this window does not appear, then go to **Start>Settings>Control Panel>Switch to Classic view>click on Add Hardware.** This window will appear.)*

Be sure to insert the driver diskette into a floppy drive.

Click Next

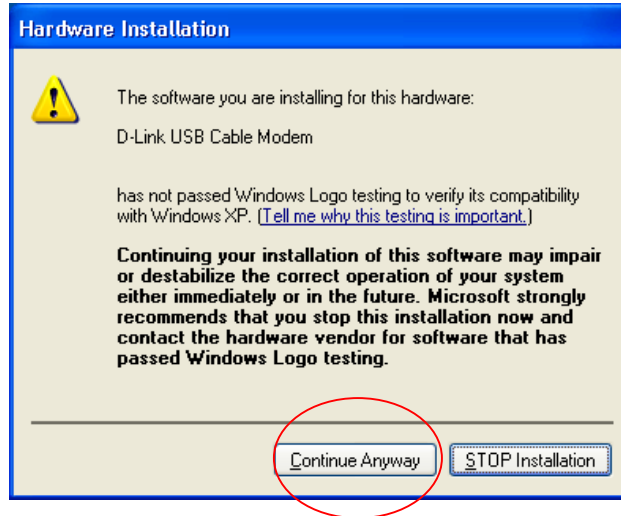


Please wait while the wizard is searching for the suitable driver.

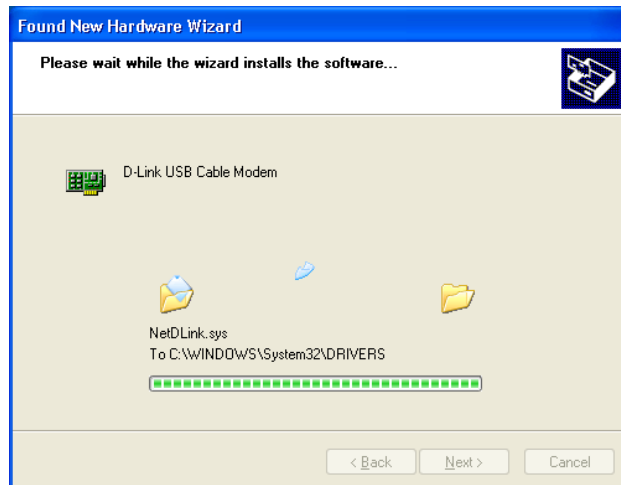
## Windows XP Continued...

If this Hardware Installation window shows, please note that D-Link is in the process of obtaining Windows Logo testing certification.

Click on **Continue Anyway**

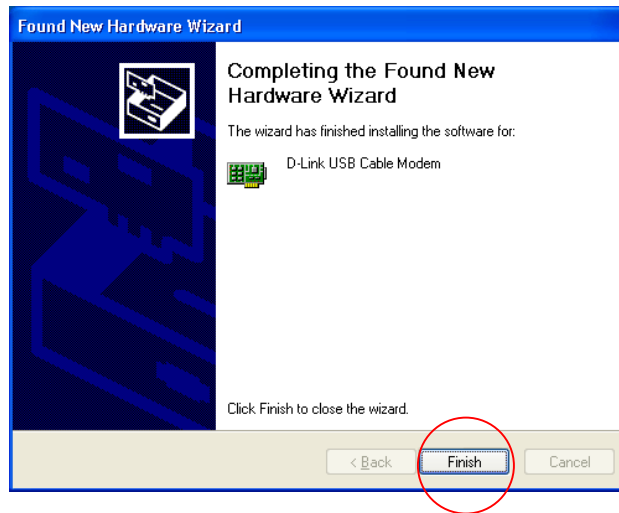


Please wait while the drivers are copied onto your computer.



## Windows XP Continued...

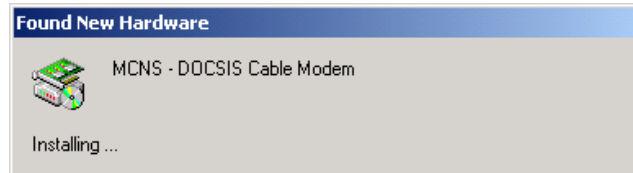
Click **Finish** to complete the driver installation procedure. The DCM-200 is now installed.



**Please note that before you can begin using the DCM-200 USB/Ethernet Cable Modem, you must restart your computer.**

## Windows 2000 Driver Installation

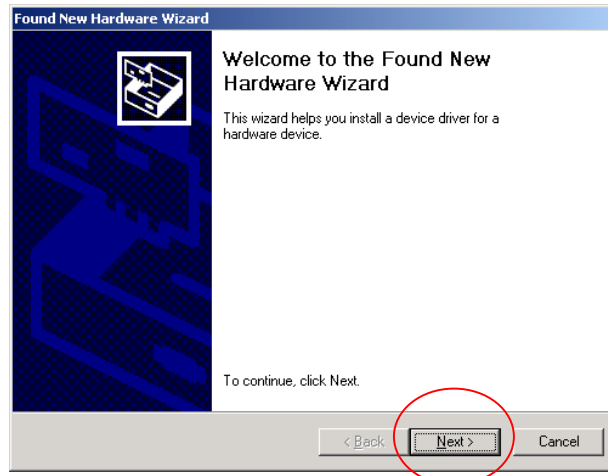
If your computer is running Windows 2000, once the USB cable is connected to the USB interface, the following window will be displayed:



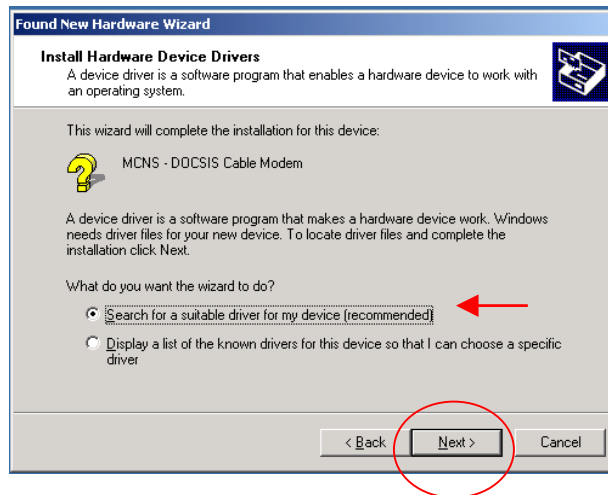
If the screen above does not appear, then go to **Start>Settings>Control Panel>Add/Remove Hardware**. The following window will appear.

## Windows 2000 *Continued...*

Click **Next**.



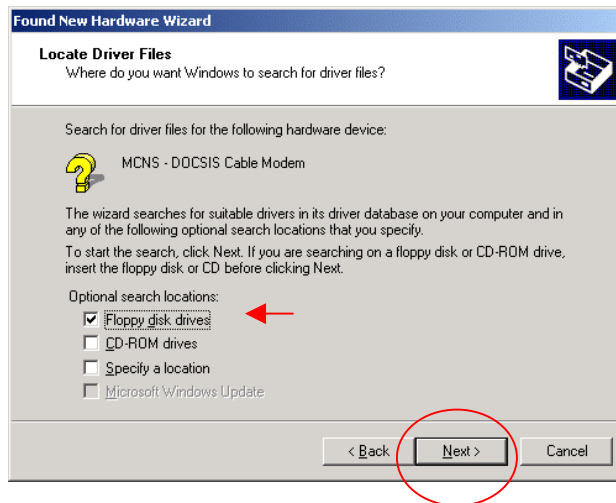
Select “**Search for a suitable driver for my device (recommended)**” and then click **Next**.



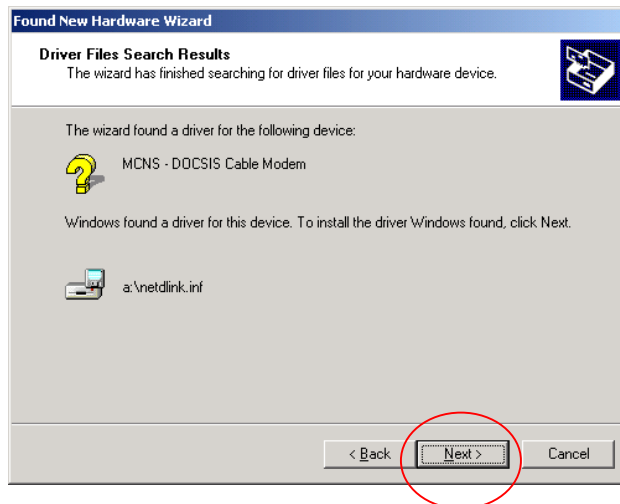


## Windows 2000 *Continued...*

- Select “**Floppy disk drive.**”
- Insert the “**Floppy disk.**”  
Click **Next.**

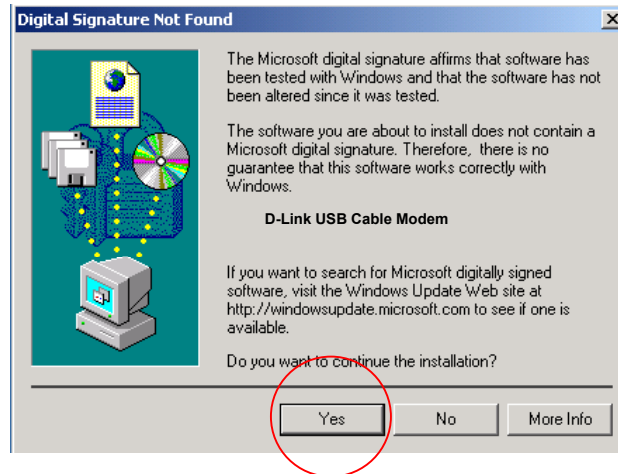


Click **Next** to allow Windows to install the driver for your DMC-200 USB/Ethernet Cable Modem.

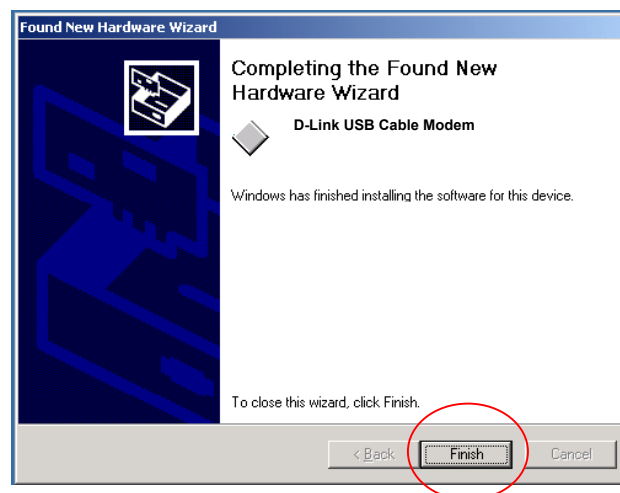


## Windows 2000 Continued...

Click **Yes** to continue.



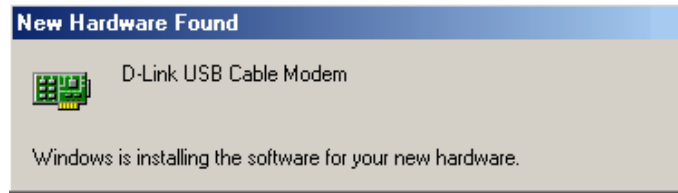
Click **Finish** to complete the driver installation procedure. The DCM-200 is now installed.



**Please note that before you can begin using the DCM-200 USB/Ethernet Cable Modem, you must restart your computer.**

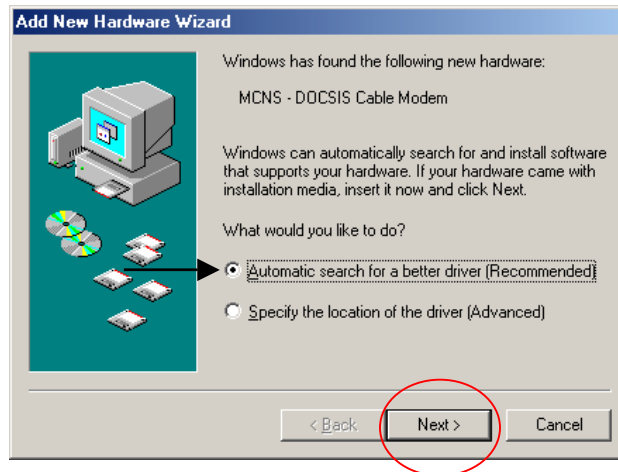
## Windows ME Driver Installation

If your computer is running Windows ME, the following window will be displayed after the USB cable is connected to the USB interface:



If the above window does not appear, then go to **Start>Settings>Control Panel>Add New Hardware**. The following window will appear.

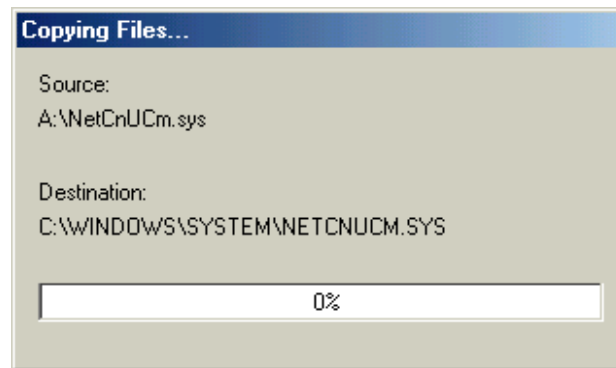
Select “**Automatic search for a better driver (Recommended)**” and then click **Next**.



## Windows ME (Millennium Edition) *Continued...*

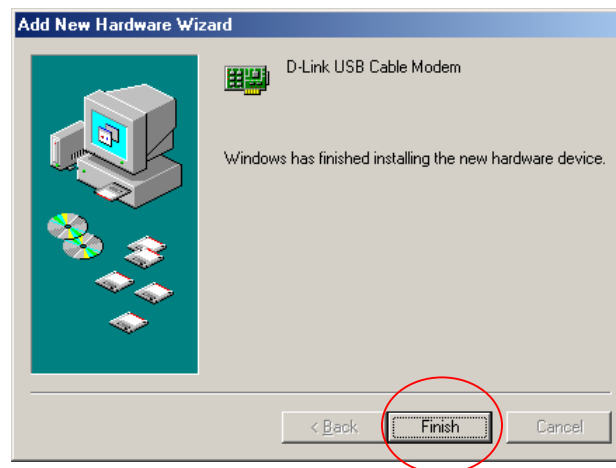
The following window will appear:

Once the necessary driver files have been copied, the following window will be displayed. In the event of a version conflict, we recommend keeping all previous versions.



Click **Finish** to complete the driver installation procedure. The DCM-200 is now installed.

**Please note that before you can begin using the DCM-200 USB/Ethernet Cable Modem, you must restart your computer.**



## Windows 98/98 SE Installation

If your computer is running Windows 98/98 SE, the computer should detect the new hardware automatically. However, if it does not, please follow the steps below to install the necessary driver:

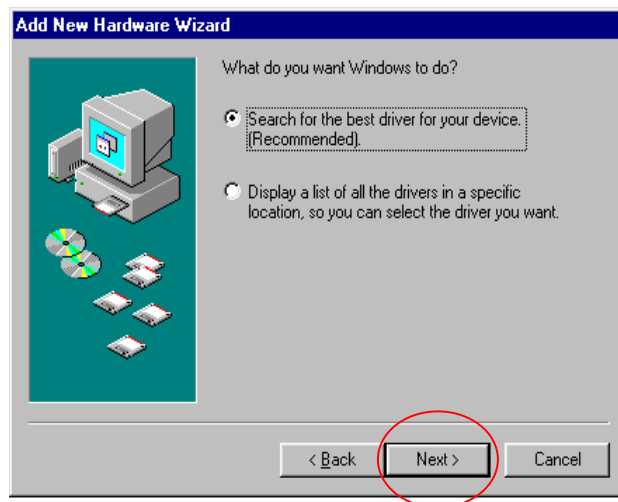
Click **Start-> Settings-> Control Panel-> Add New Hardware**. The following window will open:

## Windows ME (Millennium Edition) *Continued...*

Click **Next**.

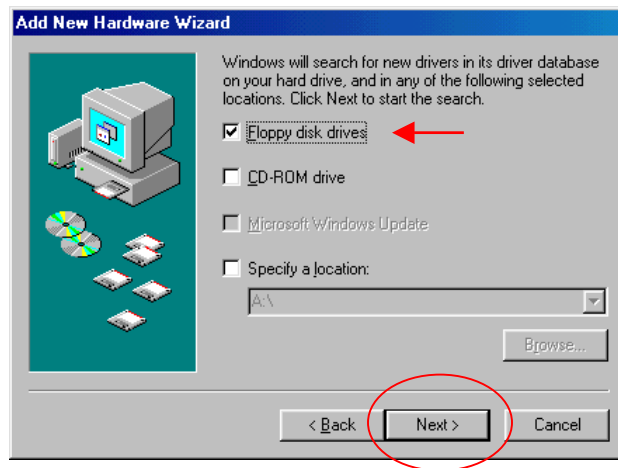


Select “**Search for the best driver for your device (Recommended).**” and then click **Next**.

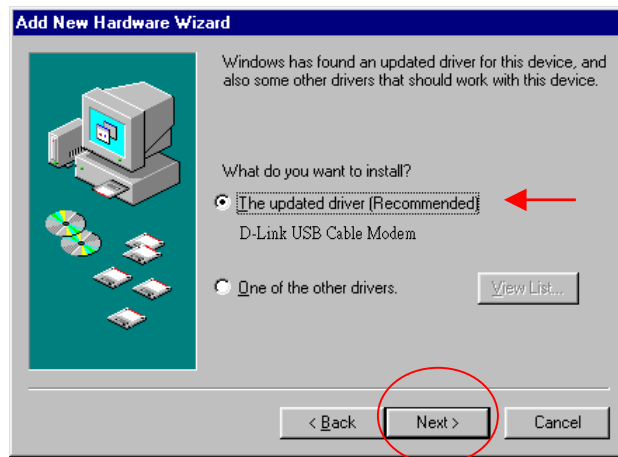


## Windows 98/98 SE Continued...

- Select “**Floppy disk drives.**”
- Insert the Driver diskette into your floppy drive and then click **Next.**

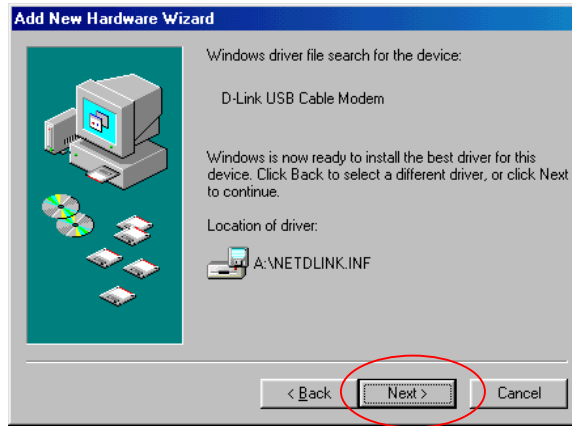


Select “**The updated driver (Recommended) D-Link USB Cable Modem**” and then click **Next.**

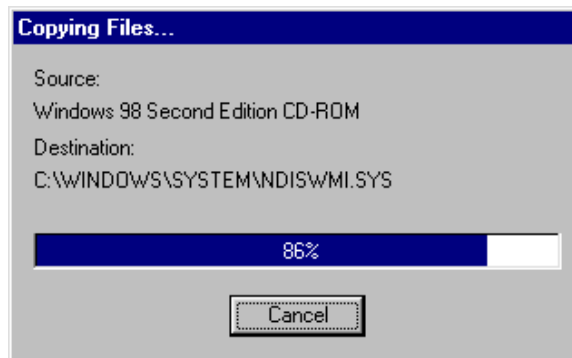


## Windows 98/98 SE Continued...

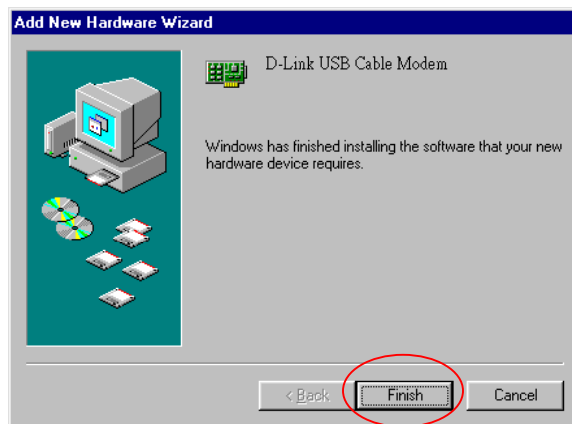
Click **Next**.



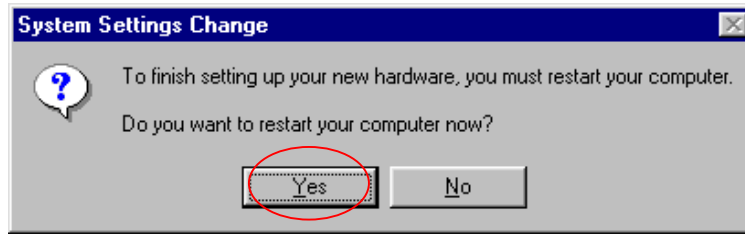
Once the necessary driver files have been copied, the following window will be displayed. In the event of a version conflict, we recommend keeping all previous versions.



Click **Finish** to complete the driver installation procedure. The DCM-200 is now installed.



## Windows 98/98 SE Continued...



Before you can begin using the DCM-200 USB/Ethernet Cable Modem, you must restart your computer. Click “Yes” to complete the installation.

# 5

## Test your Internet Connection

Open the web browser to your favorite site.



*\* Your cable service provider will provide you with the proper instructions to configure the cable software to use their Homepage and services.*

**D-Link**  
DIGITAL HOME SOLUTIONS  
Printed in Taiwan  
Version 2.3